

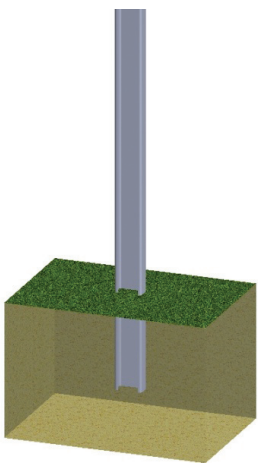
# PRU

UTILITY SCALE  
GROUND MOUNT

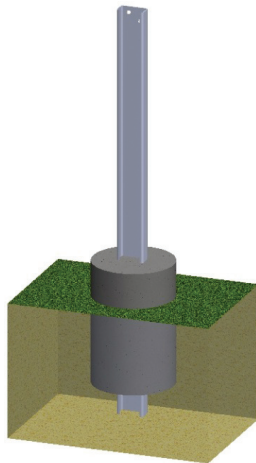
## FOUNDATION OPTIONS

The PRU racking system can be mounted securely to the ground with a variety of foundation options. Both mono and dual-post racks can accommodate these options for different ground and soil conditions.

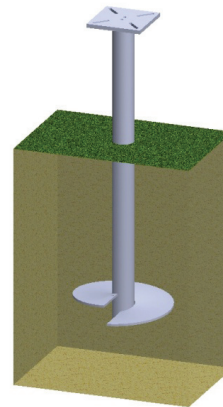
The most suitable foundation type will be dictated by the geotechnical report of the site and the project stakeholder's preferences.



**Driven Post**



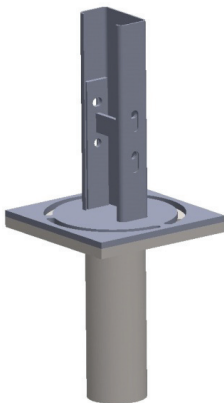
**Grouted Post**



**Helical Pier**



**Ground Screw**



**Post With  
Base Plate**



**Pre- Cast Ballasts**  
(size as per loading  
conditions)



**Pour-In Place Ballasts**  
(size as per loading  
conditions)